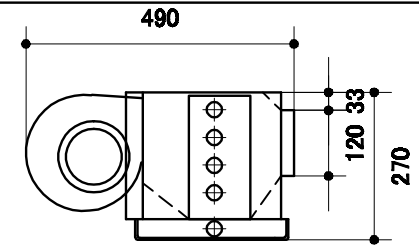
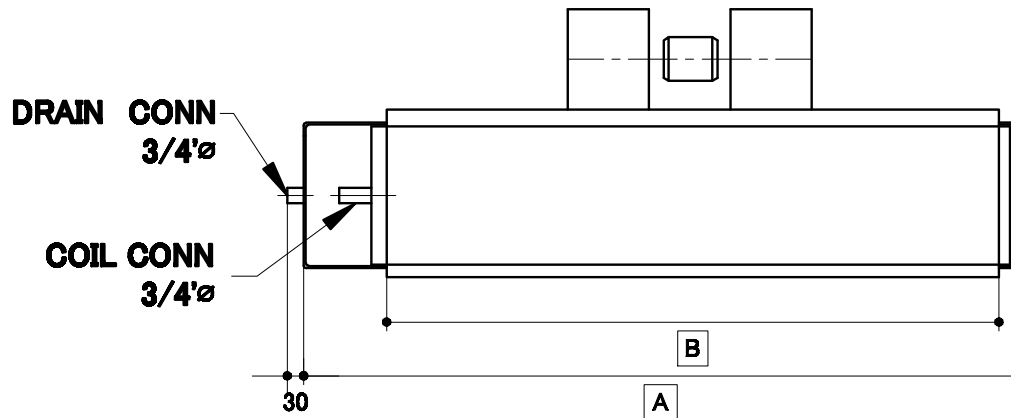
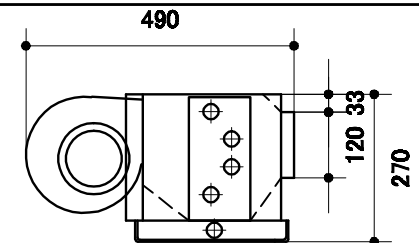


VIEW A



**4-Pipe
2R Cooling + 1R Heating**



**4-Pipe
3R Cooling + 1R Heating**

MODEL NO	AIR FLOW L/S (NOM)		DIMENSIONS (mm)		NUMBER OF		NET WT (kg)
	HS	LS	A	B	FAN	MOTOR	
CFP 300	210	170	715	534	1	1	21
CFP 400	320	270	890	710	2	1	23
CFP 600	380	330	1020	838	2	1	25
CFP 800	490	400	1305	1118	2	1	29
CFP 1000	570	500	1490	1295	3	2	37
CFP 1200	720	640	1740	1550	4	2	43
CFP 1400	870	730	1920	1728	4	2	46

NOTE : HS - HIGH STATIC MODEL, LS - LOW STATIC MODEL

CFP

GJ.WALKER 2B GLASS ST RICHMOND
Ph(03)9429 9811
Air Handling Systems Fax(03)9429 1344